

The specification for Vidtek HD-SDI PCB/L-Bracket/Housing

09/09/2011

Vidtek is pleased to announce the next 3 types of HD-SDI products for use with the Sony FCB-EH4300 and or the Sony FCB-EH6300 camera. These provide a much more flexible solution for HD-SDI output and offer the end user a simpler installation of the camera, which is capable of carrying HDTV serial digital signals across long distances, with clean, crisp, and high definition pictures.

The SDI-46 of the PCB model and the PCB, makes your integration simple without any connectors, such as 15pinDsub and 12pin Multi. Simply connect your cables to the J1 or use a 2mm pitch connector. The VFCB-SDI63L of the L-bracket model is the metal frame that attaches to the outer frame of the Sony camera, can be used in custom integration. The VFCB-SDI63H of the housing model, which encloses the entire unit, can be used for Medical, Industrial and/or Security.

Just a reminder, a couple of units of the L-bracket model will be available for you to evaluate and share with your customers. **Please send one unit of either Sony FCB-EH4300 or Sony FCB-EH6300 to Ike Tanabe at Vidtek Associates NV, Inc. first, and he will create a sales sample for you.**

Note: We recommend the Housing Model and L-Bracket Model because common impedance between the FCB and the PCB could not be at “0” ohms and could create some emissions under the high frequency of 1.485GHz. The integration of the PCB will take some time and requires other components to reduce the radiation, but the Housing Model and L-Bracket Model could drastically save you time and money.

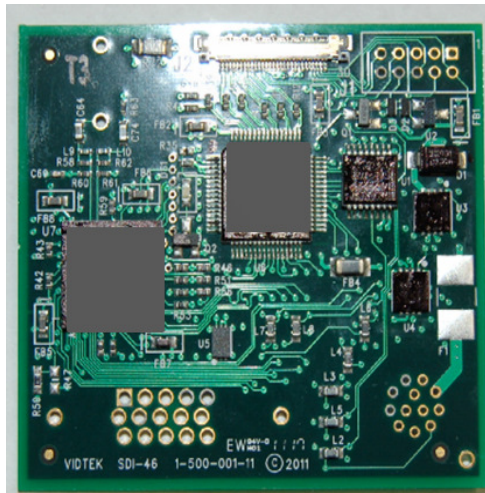
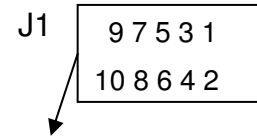
Electrical Specification

Input

- DC in: +6.3 to 7.0 V for SDI-46 PCB
- DC in: +6.3 to 9.0 V for L-Bracket/Housing
- Visca Protocol
- LVDS from 4300/6300
- Reset from 6300

Output

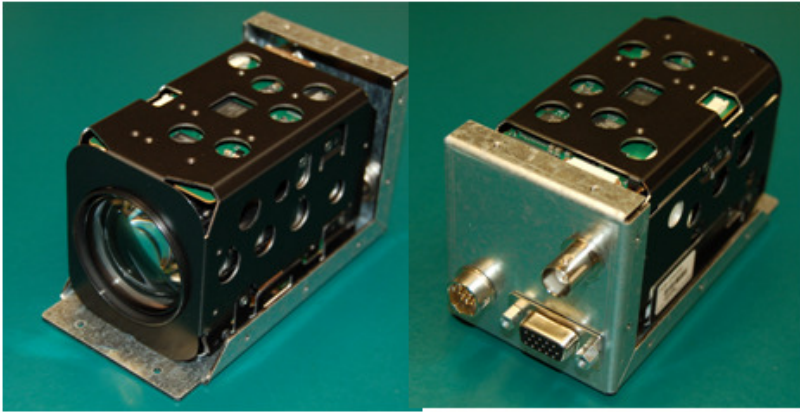
- HD-SDI (SMPTE292M)
 - 1080i 1920x1080
 - 720p 1280x720
- 1.485GHz
- 800mV±10%
- 75Ω
- Analog out: Y/Pb/Pr
- 52(W) x 48(H) mm



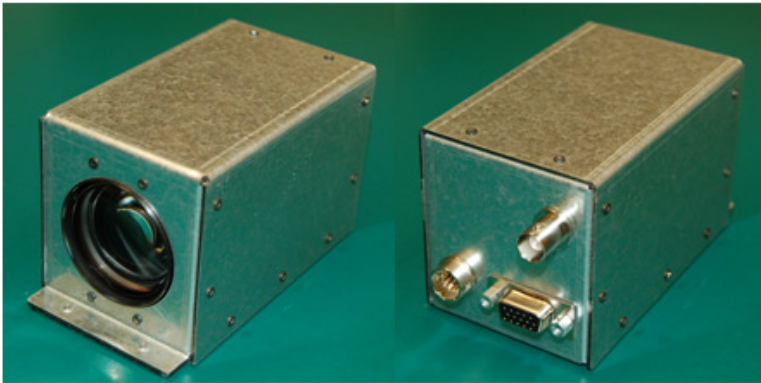
J1-Pin Assignment	
1 DC in	2 Pr
3 DC in	4 Y
5 GND	6 Pb
7 TxD	8 Reset
9 RxD	10 GND

30pin Coaxial Cable is not included because of custom length.
Please contact to Ike Tanabe about the cable details.

L- Bracket of VFCB-SDI63L



Housing of VFCB-SDI63H



Pin Configurations

	Multi 12P		Dsub 15pin
1	GND	1	Pr
2	+6.3 to +9.0V	2	Y
3	GND	3	Pb
4	-	4	-
5	GND	5	GND
6	-	6	Pr(GND)
7	Reset	7	Y(GND)
8	GND	8	Pb GND)
9	-	9	-
10	TXD	10	GND
11	RXD	11	-
12	GND (RS232C)	12	-
		13	
		14	
		15	-

Mechanical Specification of the SDI-46 PCB, L-Bracket and Housing models

See the page 3 of Dimensions.

Black paint models are also available; please contact Ike Tanabe for more information.

Please contact me if you have any questions.

Thank you,

Ike Tanabe

R&D and New Business Development

Vidtek Associates NV, Inc.

1235 Coney Island Dr.

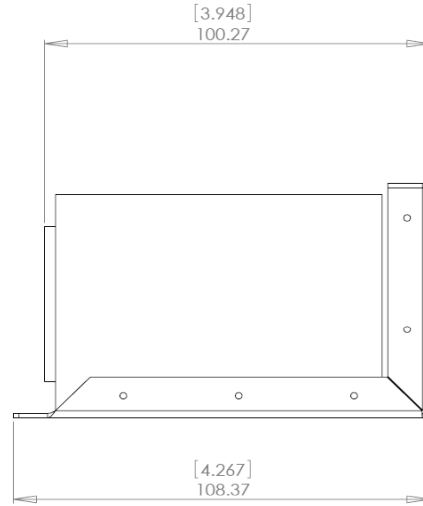
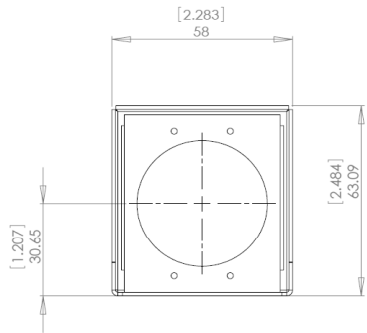
Sparks, NV 89431

Phone: 775-356-8787

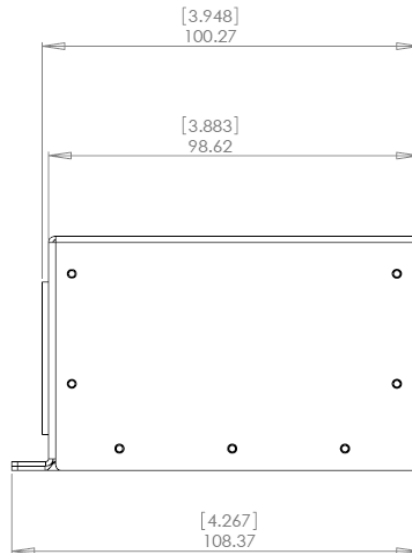
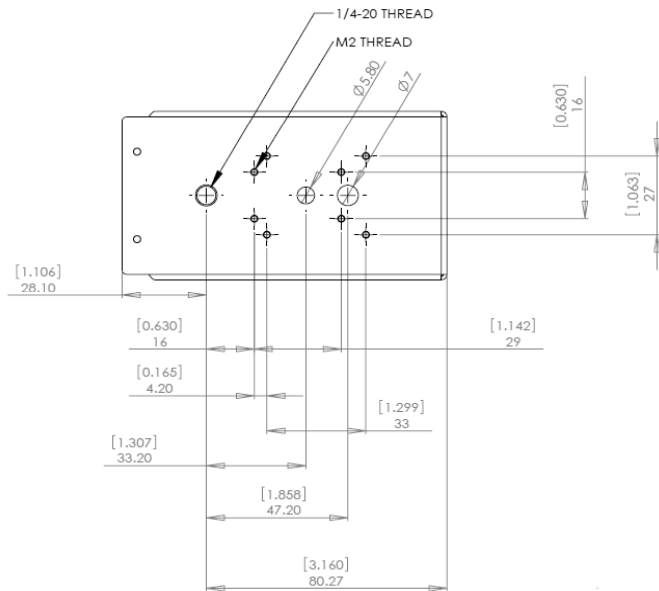
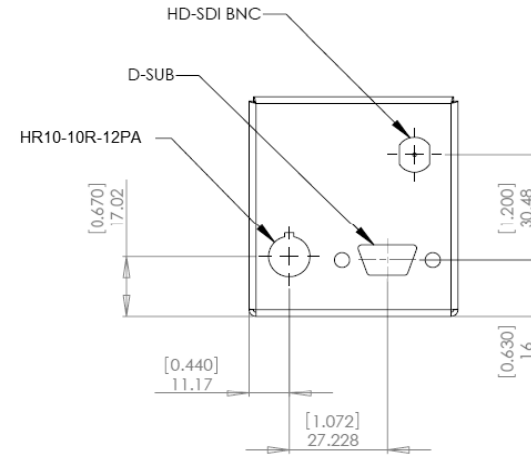
Fax: 775-356-8799

Email: ike.tanabe@vidtek.com

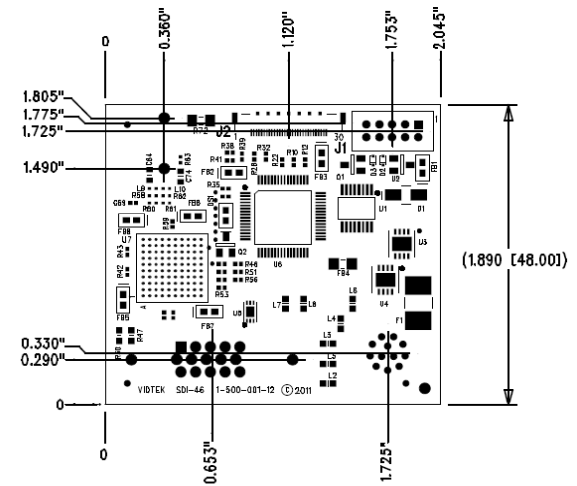
Dimensions:



< L-Bracket >



< Housing >



< SDI-46 PCB >

Vidtek Confidential

Vidtek Associates NV, Inc. R&D Division Phone: 775-356-8787 email: ike.tanabe@vidtek.com