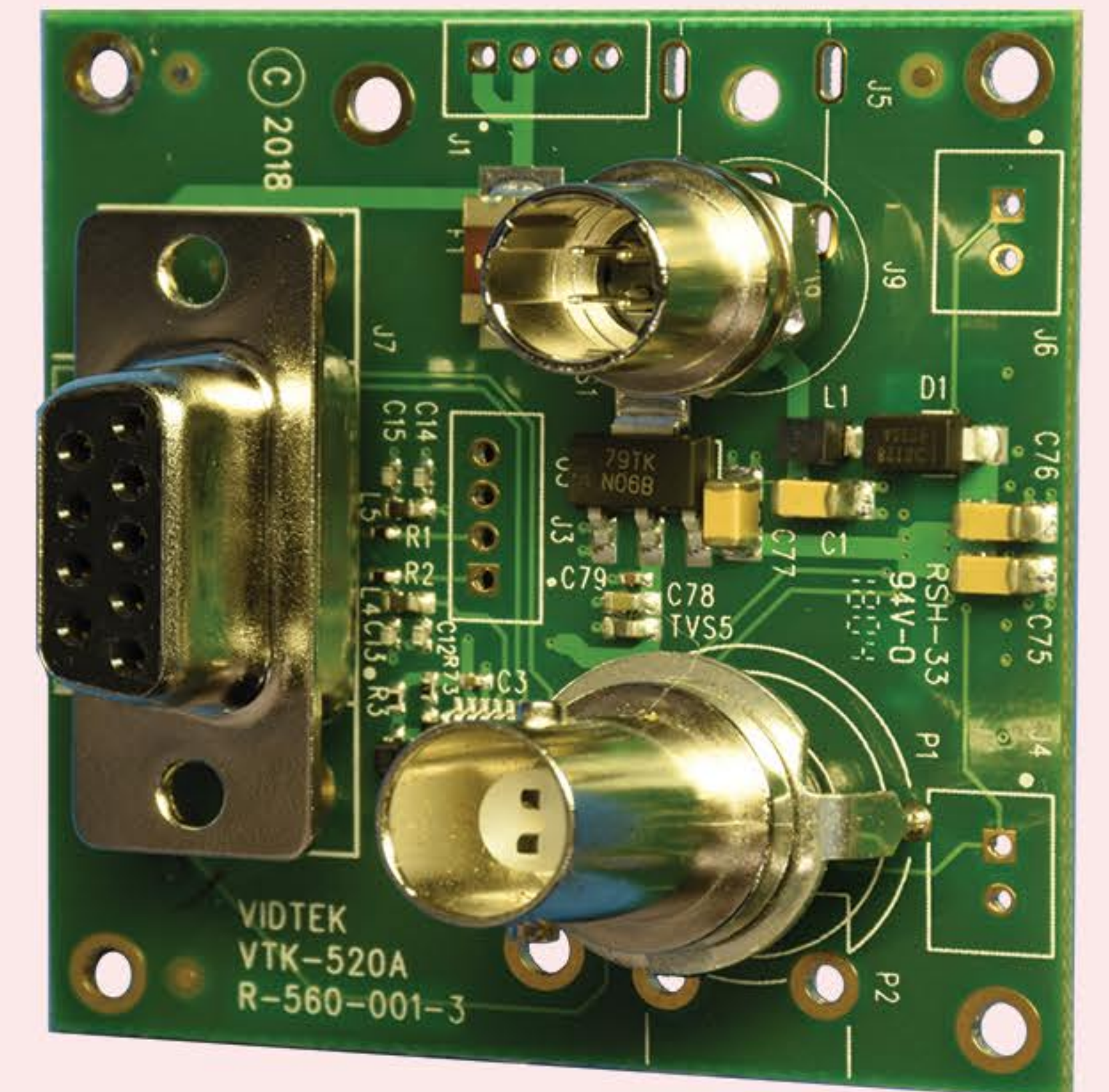


Analog Interface Board for SONY FCB-EV7520A

VTK-520A interface board allows user to power up **FCB-EV7520A** block camera and provides composite video output. In addition, the onboard RS-232C interface allows the user to transmit and receive VISCA commands and instructions to and from the camera.



- Medical Applications
- Security
- Drone Camera
- Industrial Vision
- Broadcasting
- Underwater Applications

Housing Options

V 100

Custom designed Housing, Back Panel and Mounting Bracket are available upon request*



* For more information please refer to Vidtek Camera Series catalog.

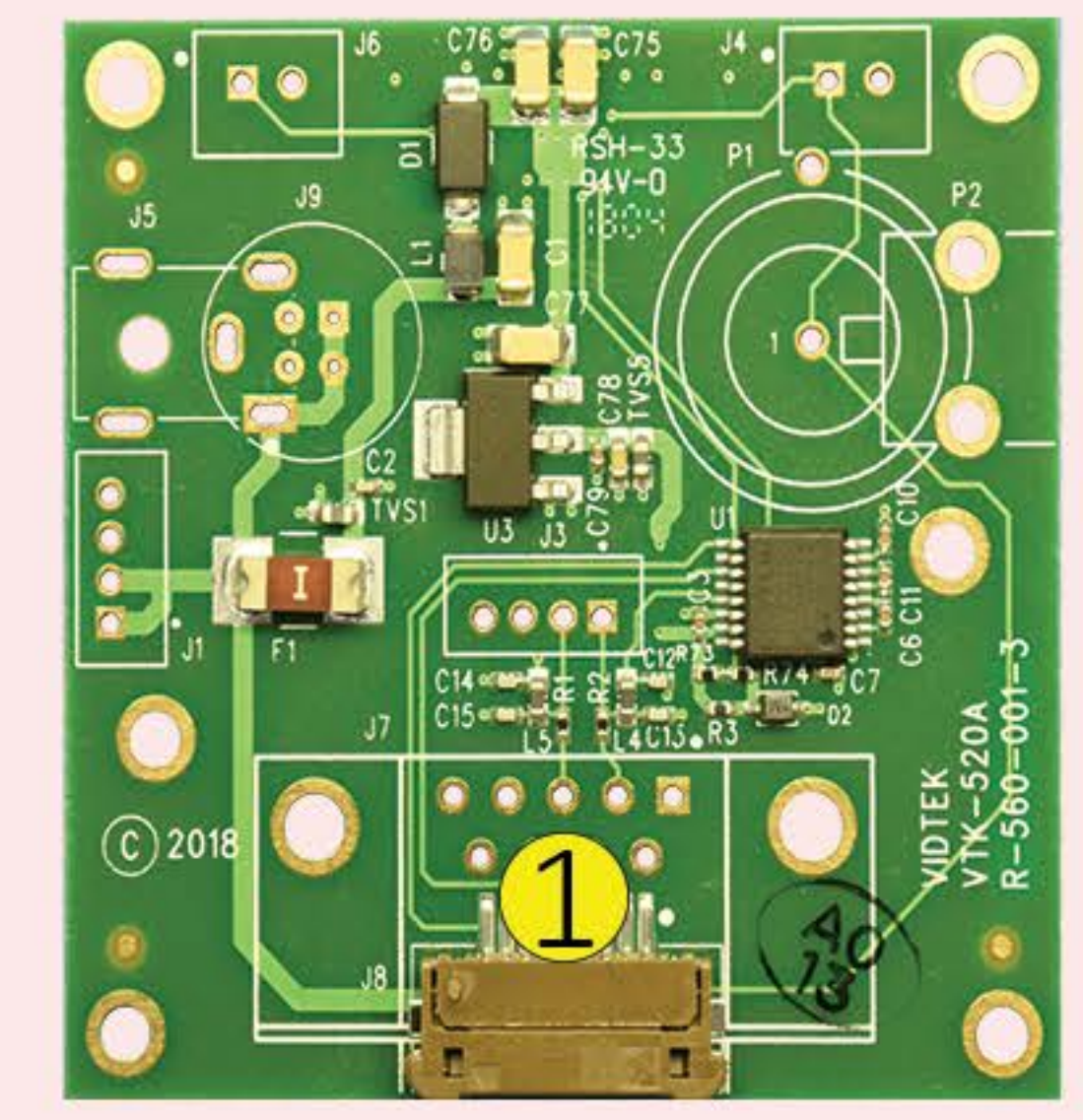
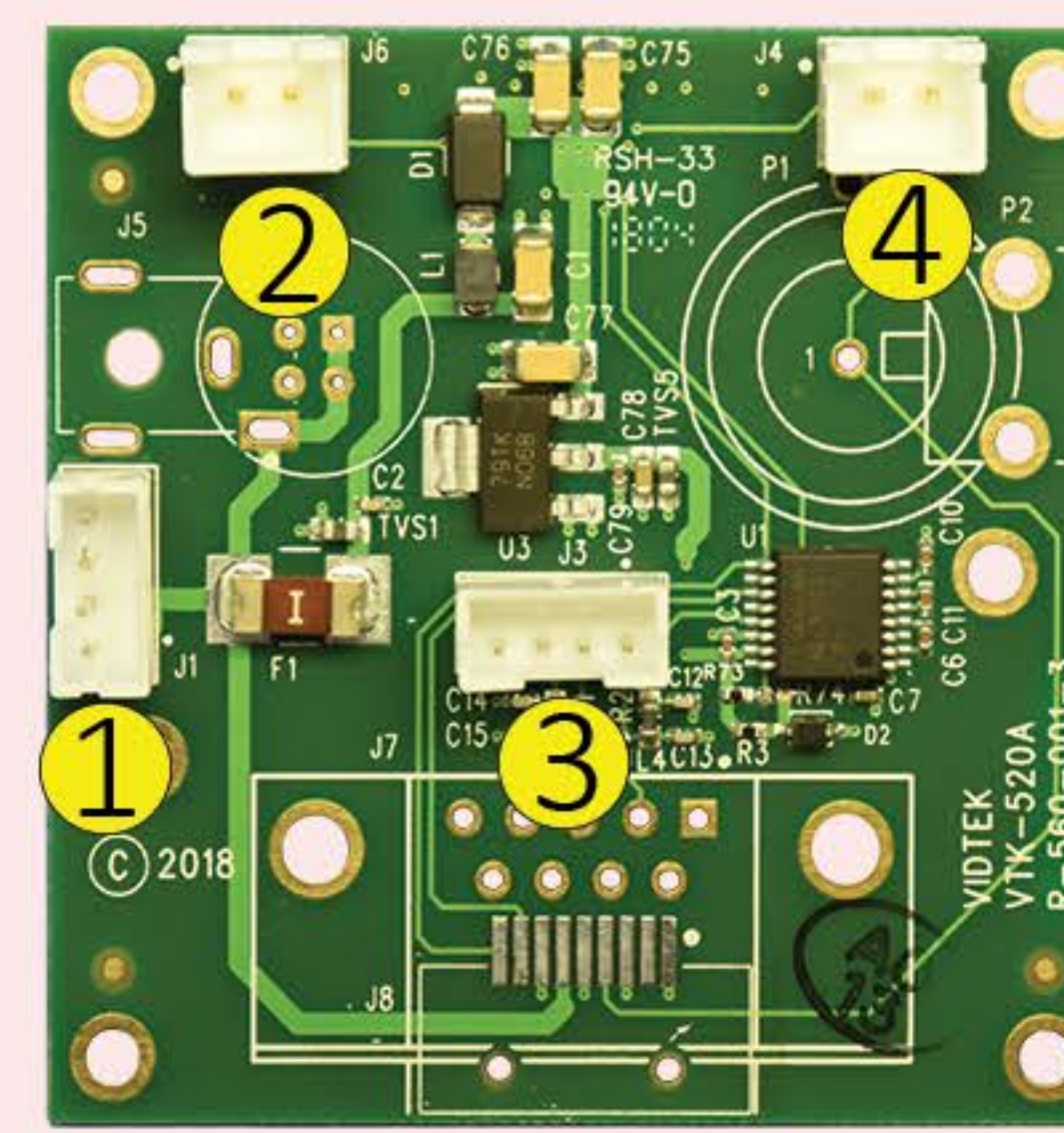
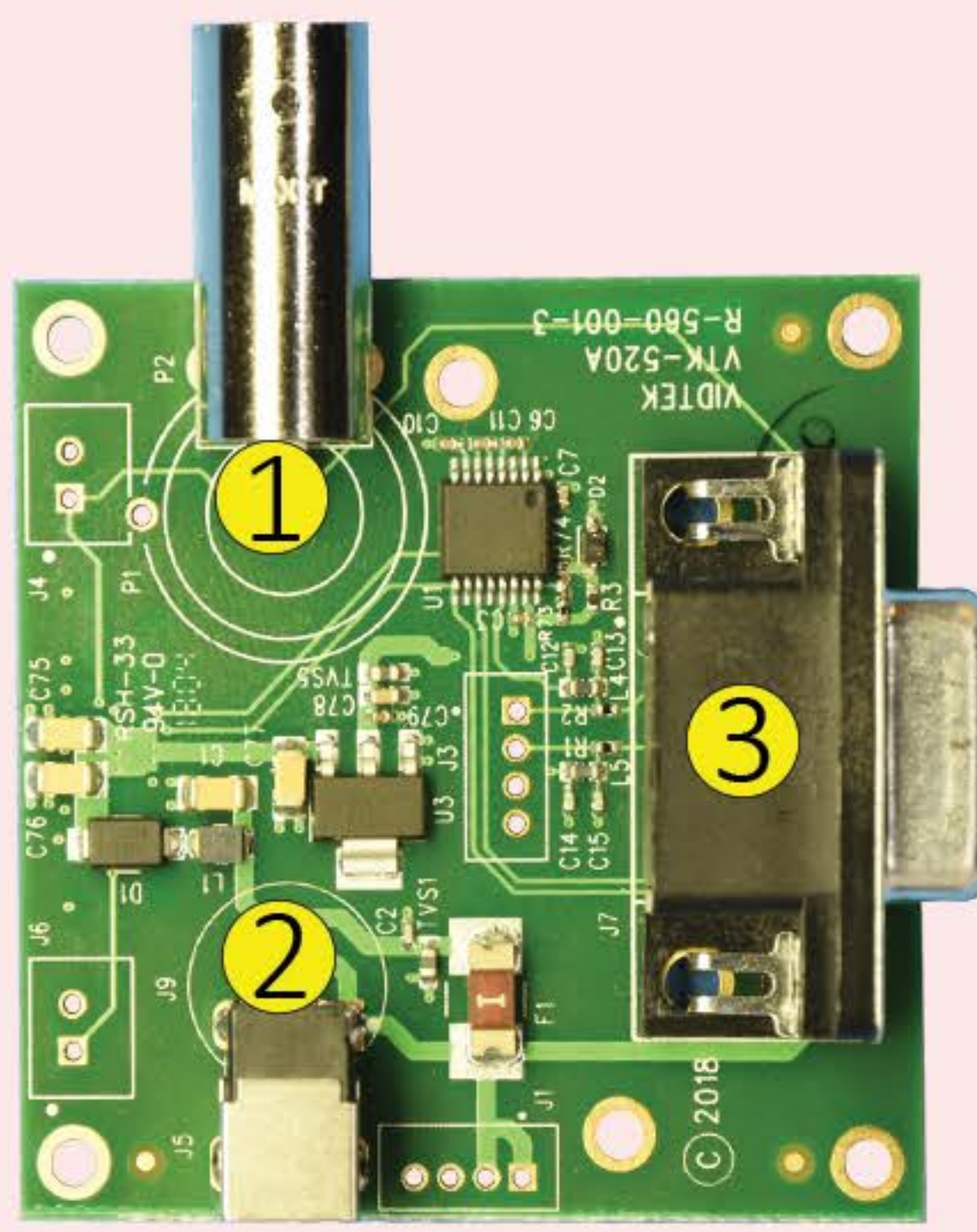
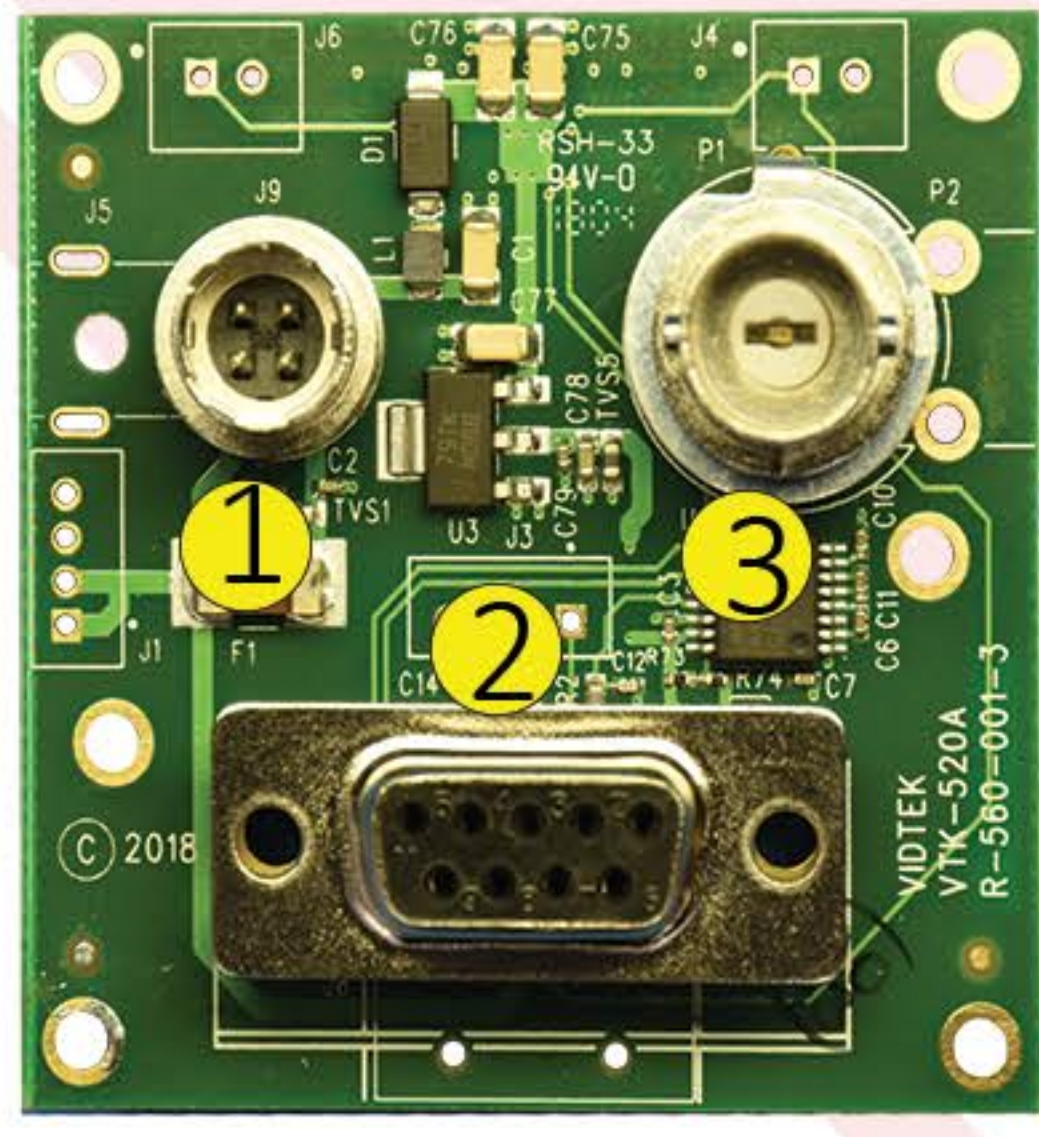
Sony FCB-EV7520A



- Capture crisp, clear Full HD (1080/60p) images
- Fast, bright lens with rapid 20x optical zoom
- StableZoom™
- 2D/3D Noise Reduction
- Clear vision round the clock with Day/Night
- Auto ICR (Auto IR-cut Filter Removal)
- Spherical privacy zone masking One-cable connection for simpler integration
- Wide range of features for versatile operation

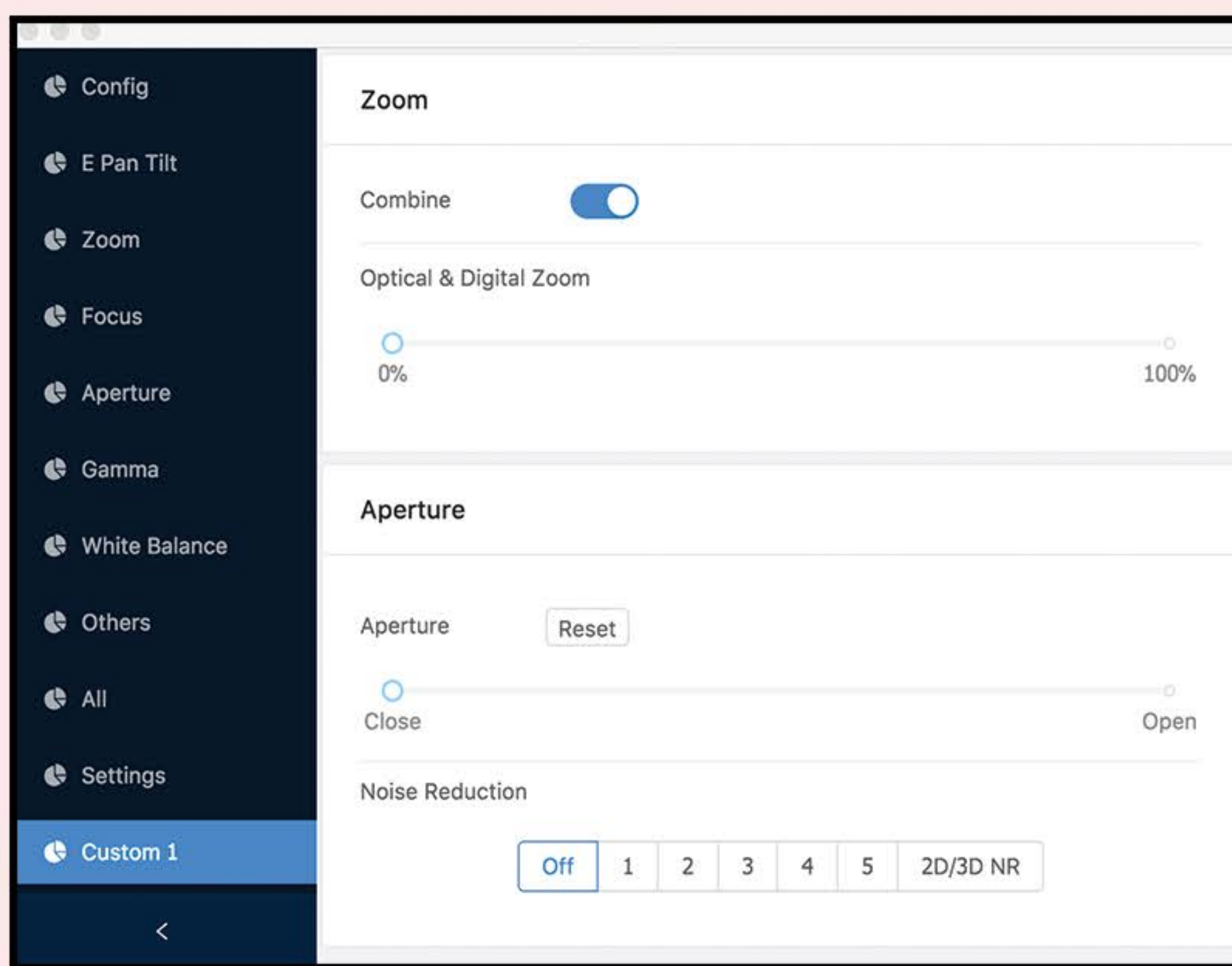


Available in four types:



Models	VTK-520A1	VTK-520A2	VTK-520A3	VTK-520A4
Connectors	<ul style="list-style-type: none"> ① 4-Pin Hirose power jack ② RS-232 DSUB9 ③ VBS video out 	<ul style="list-style-type: none"> ① 5.5mm power jack ② RS-232 DSUB9 ③ VBS video out 	<ul style="list-style-type: none"> ① Power header (J1) ② RS-232 header (J3) ③ VBS video out (J4) ④ Reset header (J9) 	<ul style="list-style-type: none"> ① 9 pin FFC connector
Features	<ul style="list-style-type: none"> • Vertical connectors • Panel mountable 	<ul style="list-style-type: none"> • Right angel connectors • Standalone jig board • No mounting panel needed 	<ul style="list-style-type: none"> • Standard headers • Custom connectors based on user system needs 	<ul style="list-style-type: none"> • Standard 9-pin Sony FFC connector • Compatible with systems based on Sony analog cameras
Accessories	<ul style="list-style-type: none"> • 12V Power supply with 4pin Hirose plug • D-sub9 M/M cable (3ft) • BNC cable (3ft) 	<ul style="list-style-type: none"> • 12V Power supply with 5.5mm plug • D-sub9 M/M cable (3ft) • BNC cable (3ft) 	<ul style="list-style-type: none"> • 2x open end 2-pin female connector cable • 2x open end 4-pin female connector cable 	<ul style="list-style-type: none"> • 9 Pin flat 1mm pitch FFC connector cable (100mm)

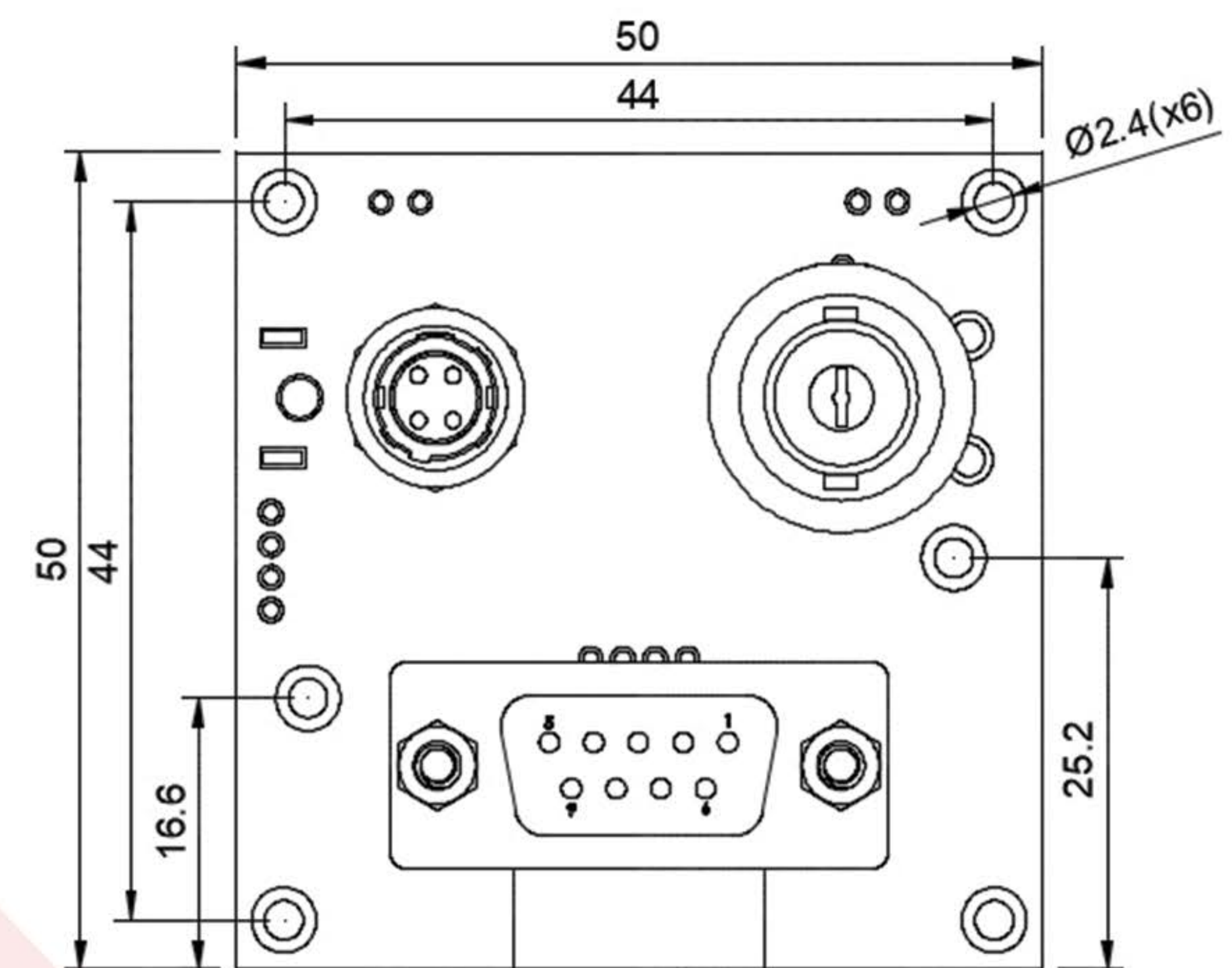
Software



Vidtek has developed an intuitive control software and API for Sony block cameras. Our highly customizable user friendly software works with VTK-520A series and FCB-EV7520A.



Dimensions



For evaluation or any other inquiry, please contact Vidtek at: info@vidtek.com

Vidtek Associates, Inc.

www.vidtek.com

R&D
280 Martin Ave
Santa Clara, CA 95050
(408) 970-0661

Manufacturing
1235 Coney Island Dr
Sparks, NV 89431
(775) 356-8787

Sales & Marketing
809 W. Stadium Ln
Sacramento, CA 95834
(916) 929-4431