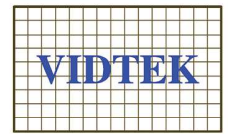


Vidtek Camera Series

for SONY FCB Cameras
and Vidtek Interface Boards

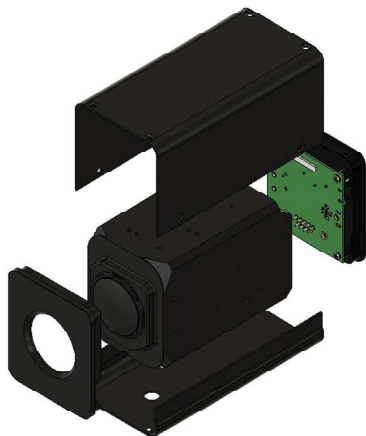
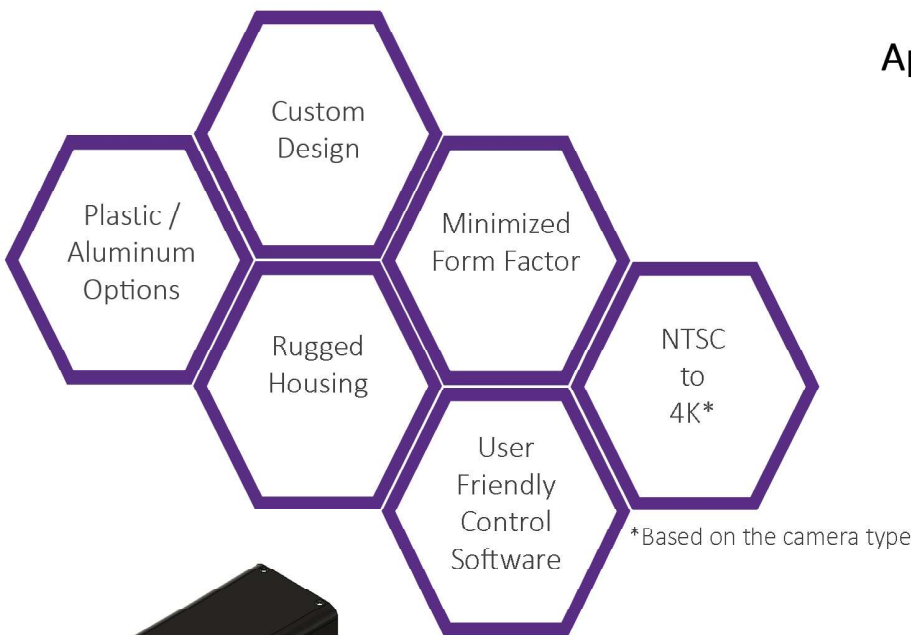


Vidtek camera systems provide complete imaging solutions by including a combination of Sony block cameras and Vidtek's interface boards in rugged aluminum or plastic housings. They offer a variety of video resolution from digital QFHD (4K) to NTSC analog output on HDMI, HD-SDI or BNC interfaces while upholding optimum video signal quality. The compact housing design is engineered to protect the camera in harsh environments and shields it against weather conditions to make it ideal for any indoor or outdoor application.



Applications:

- Medical Applications
- Industrial Vision
- Security
- Broadcasting
- Drone Camera
- Underwater Applications



Powered by:
Sony FCB Cameras
Vidtek Interface Boards
Vidtek Control Software

The VISCA serial interface on Vidtek camera systems allows user to control camera using standard RS232C port. The state of the art and simple Vidtek's VSC software lets users to control camera easily and intuitively without need of learning camera commands.

Available in three types:



Models	6VTK-520HDSDI	7VTK-520A	8VTK-550-4K
Features	<ul style="list-style-type: none"> FHD (1080P) HD-SDI and VBS analog video output on a BNC connector Single cable connection to camera through Hirose Video Outputs <ul style="list-style-type: none"> HD-SDI (SMPTE292M/259M) <ul style="list-style-type: none"> 1080p (30/29.97/25Hz) 1080i (60/59.94/50Hz) 720p (30/29.97/25Hz) VBS/NTSC Analog output Fast, bright lens with rapid 30x optical zoom image stabilizer 2D/3D Noise Reduction Auto ICR (Auto IR-cut Filter Removal) Spherical privacy zone masking 	<ul style="list-style-type: none"> VBS analog video output on a BNC connector 4pin 9-12V Hirose power input RS232C on DB9 connector 50Hz or 60Hz VBS video output Fast, bright lens with rapid 30x optical zoom image stabilizer 2D/3D Noise Reduction Auto ICR (Auto IR-cut Filter Removal) Spherical privacy zone masking 	<ul style="list-style-type: none"> Up to QHD(4K) HDMI output 4pin 9-12V Hirose power input RS232C on DB9 connector External Sync Power and Sync LED indicators Micro USB for camera firmware upgrade HDMI cable gain control switch Supported resolutions <ul style="list-style-type: none"> QFHD (3840 × 2160) @ 29.97p and 25p FHD (1920 × 1080) @ 59.94p, 50p, 59.94i, 50i, 29.97p and 25p, HD (1280 × 720) @ 59.94p, 50p, 29.97p and 25p Fast, bright lens with rapid 30x optical zoom Image stabilizer 2D/3D noise reduction Auto ICR (Auto IR-cut Filter Removal) Spherical privacy zone masking
Camera	Sony FCB-EV7520A	Sony FCB-EV7520A	Sony FCB-ER8300 Sony FCB-ER8530 Sony FCB-ER8550
Interface Board	VTK-520-HDSDI*	VTK-520A1*	VTK-550-4K1*
Accessories	<ul style="list-style-type: none"> CA-009 Evaluation Kit PA-009 power supply VFCB-SDI63L L-bracket mount 	<ul style="list-style-type: none"> +12V Hirose power supply DB9 M/M cable vBNC cable (3ft) 	<ul style="list-style-type: none"> +12V Hirose power supply 4K HDMI cable (3ft) DB9 M/M cable BNC cable (3ft)
Software*	Vidtek Control Software	Vidtek Control Software	Vidtek Control Software

* For more information and complete technical data please refer to the products brochure



Back panels and mounting brackets for Vidtek interface boards are available upon request.



For evaluation or any other inquiry, please contact Vidtek at: info@vidtek.com

Vidtek Associates, Inc.

www.vidtek.com

R&D

280 Martin Ave
Santa Clara, CA 95050
(408) 970-0661

Manufacturing

1235 Coney Island Dr
Sparks, NV 89431
(775) 356-8787

Sales & Marketing

809 W. Stadium Ln
Sacramento, CA 95834
(916) 929-4431